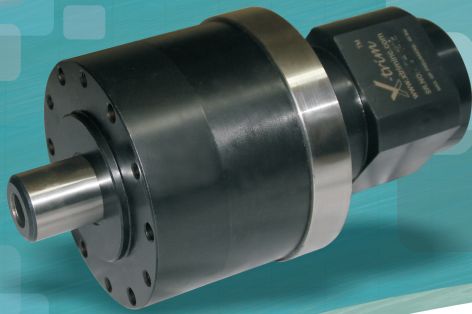




... Race for quality has no finish line ...

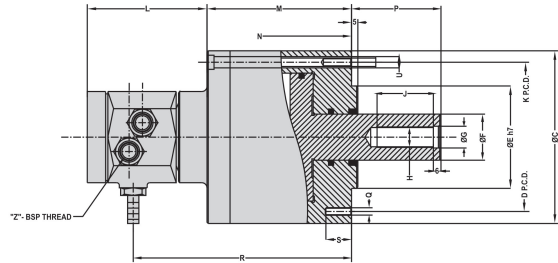


www.xtriminc.com

Rotary Cylinders

A hydraulic rotary cylinder is installed at the rear of the lathe spindle to offer axial actuation to the power chuck or collet chuck to grip and to release the work part. This not only saves human power but also makes it possible to control loading/unloading the work-part in full automation or semi automation. We offer a complete selection of rotary cylinder to cope with modern cnc lathe machines according to your necessary. Our product line of rotary cylinders include standard hydraulic cylinder, compact size hydraulic cylinder, low cost close center hydraulic cylinder etc.

Each rotary hydraulic cylinder has to pass a series of quality control examinations before delivery so as to make sure that we offer top quality products.



Model	60 CC	80 CC	105 CC	120 CC	160 CC
Piston Dia-A	60	80	105	120	160
Stroke B	20	32	32	32	35
C	90	110	135	150	200
D (P.C.D.)	75	95	120	95	145
E (H7)	50	80	80	70	95
F (H7)	22	30	36	36	36
G	14	17	17	17	25
H	M12	M16	M16	M16	M24
J	25	35	55	55	55
K (P.C.D.)	75	110	120	135	180
L	95	95	106	106	106
M	81	105	113	113	113
P (MAX.)	40	47	70	70	80
P (MIN.)	20	15	38	38	45
Q	4xM8	4xM8	6xM8	4xM12	4xM16
S	15	20	20	20	22
U	4xM8	6xM8	6xM8	6xM8	8xM10
Z	1/4" BSP	1/4" BSP	3/8" BSP	3/8" BSP	3/8" BSP

Max. Speed - R.P.M.	4500	4500	4000	4000	4000
Max. Operating Pressure Kg/Cm	35	40	40	40	40
Max. Oil Leakage Rate In Ltrs/Min.	0.9	0.8	0.8	0.8	0.8

*** Leakage test done at a pressure of 32 bar & oil temperature at 40°C.



Shed No. 15, Survey No. 23, N.H. 88, B/h. TATA Perfect Showroom, Vavdi, Rajkot-360 004 (GUJ) Cell. F. : 098259 11097
E-mail : x_trim@rediffmail.com / info@xtriminc.com Web : www.xtriminc.com